

HomePlug AV (500Mbps) > Wireless N Access Point

GigaFast HomePlug AV Wireless N Access Point allows you to create or extend a wireless network using HomePlug powerline technology. Using HomePlug as the network backbone, PS858-AP can be placed at where a wireless signal is needed, rather than at the farthest corner of a wireless network. Multiple PS858-AP can be used to cover larger areas without increasing wireless radiation and with HomePlug powerline technology as your backbone, no additional wiring will be required.

Current wireless technology requires the use of multiple antennas or increased power output. However, the fundamental problem remains: Wireless signals cannot pass through solid objects such as cement walls or building foundations. PS858-AP coverage is provided by sending data signals through the walls themselves via the powerline and then providing wireless connectivity in the room where it is needed. Data throughput is then significantly higher than boosting any antenna. With wireless throughput at 300Mbps and HomePlug throughput at 500Mbps, this HomePlug AV Wireless N Access Point is the perfect addition to the GigaFast HomePlug product line.



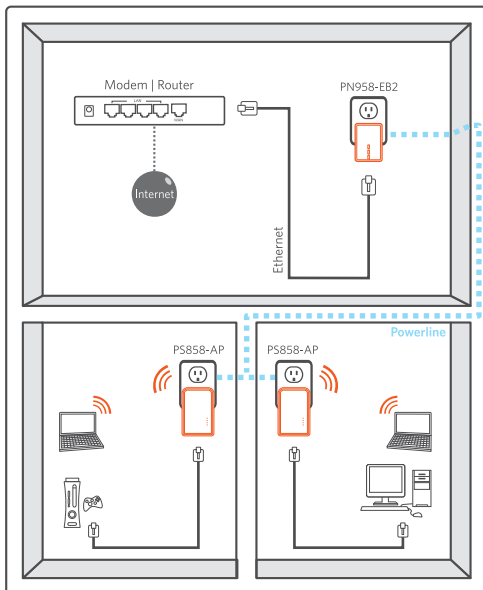
Features

- Create or extend a wireless network by using HomePlug Powerline technology as the network backbone
- 500Mbps HomePlug performance-ideal for media-centric applications like HD IPTV, gaming and Voice over IP technology
- Compatible with IEEE802.11n Draft 2.0 specifications providing wireless speed up to 300Mbps PHY rate. Also compatible with IEEE802.11g high rate standard providing wireless speed up to 54Mbps PHY rate
- Co-exist with HomePlug 1.0 (14 / 85Mbps)
- Highest level of security with 128-bit AES encryption and WEP / WPA wireless security

Specifications

	HomePlug	Wireless
Standards	HomePlug AV	802.11 a/b/g/n
Security	128 bit AES	64/128 bit WEP, TKIP, AES
Data PHY Rate	Up to 500Mbps	Up to 300Mbps
Modulation Schemes	OFDM symbol modulation on line synchronization 1024/256/64/16/8-QAM, QPSK, BPSK, ROBO carrier modulation	BPSK/QPSK/16-QAM/64-QAM
Frequency Band	2 - 50 MHz	2.4GHz - 5GHz
Operation Range	Up to 300 meters	Up to 100 meters indoor Up to 280 meters outdoor
Additional Protocols	Mix of TDMA and CSMA/CA channel access scheme; CO device generates a periodic beacon carrier for channel access scheme	N/A

Application



Main Chipset

Network Interface

Operating Temperature

Storage Temperature

Humidity

Power Input

Power Connector

Housing

Software Utility

Status Lights

Certifications

Qualcomm AR7420 + AR9344

One 10/100Base-T with RJ45 port (LAN)

0°C to 40°C ambient temperature

-10°C to 70°C ambient temperature

10 to 90% maximum (non-condensing)

100 - 240V @ 50/60Hz internal

Embedded US / EU / UK specifications

Plastic (96mm x 60mm x 36mm)

Device detect/diagnostic, NEK password setup for local and remote device Windows XP, 7, or 8 for initial setup (optional)

Power: on / off

PL link: red / orange / green / off

Ethernet link: solid / blinking / off

Wireless link: solid / blinking / off

HomePlug AV Powerline certification

FCC Class B / CE mark

