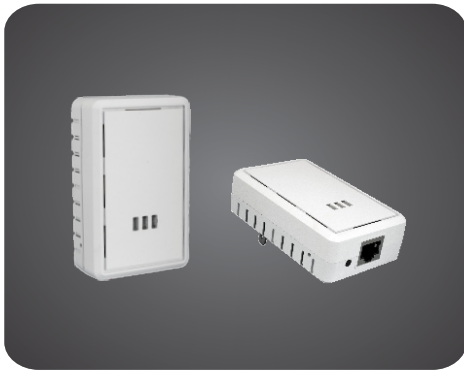


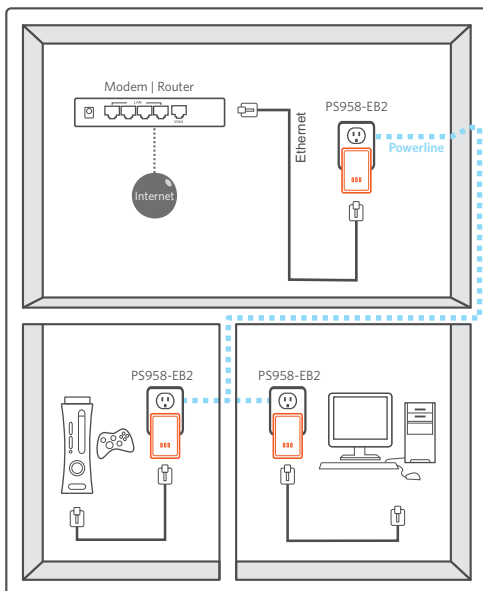
## HomePlug AV (500Mbps) > mini Ethernet Bridge

The GigaFast HomePlug AV 500Mbps mini Ethernet Bridge operates on the HomePlug Powerline AV Specification standard, providing up to 500Mbps bandwidth over home AC wiring. PS958-EB2 is one of the smallest HomePlug AV 500Mbps Ethernet Bridge on the market. Combined with a broadband DSL/Cable connection, every room with electrical power outlets will have easy access to high-speed Internet connection. With the 500Mbps high bandwidth, this PS958-EB2 can provide ultra fast streaming HD movies, online multi-player games, and other data intensive activities for today's HD Entertainment Center demand. With a plug and play installation, you can easily combine all of your AV electronics together and instantly enjoy your Entertainment Center from virtually any room in your home.

Like all of our HomePlug AV products, this PS958-EB2 is equipped with 128-bit AES security encryption. Combining the private home power grid and the 128-bit AES security encryption, this PS958-EB2 is extremely secure compared to other network technologies.



## Application



## Features

- Qualcomm AR7420 chipset
- IEEE1901 / HomePlug AV standard
- Ultra small casing
- Up to 500Mbps PHY rate
- Co-exists with HomePlug 1.0 (14/85Mbps)
- Stand-alone unit attaches directly to Broadband device and home power line network for seamless integration
- Security push button for software free configuration
- Power packet utility provides unsophisticated users a way to graphically manage their HomePlug network (optional)

## Specifications

Main Chipset	Qualcomm AR7420
Computer Interface	IEEE802.3 (10BASE-T) IEEE802.3u (100BASE-T)
Standards	IEEE 1901 / HomePlug AV
Network Interface	One RJ-45 (10/100Base-T Ethernet) One 500Mbps power line port supporting co-existence with HomePlug 1.0 (14/85Mbps)
Security	128-bit AES link encryption with key management
Data PHY Rate	500Mbps over Powerline and 10/100Mbps over Ethernet
Modulation Schemes	OFDM symbol modulation on line synchronization 1024/256/64/16/8 - QAM, QPSK, BPSK, ROBO carrier modulation
Frequency Band	2 ~ 50 Mhz
Additional Protocols	Mix of TDMA and CSMA/CA channel access scheme; CO device generates a periodic beacon carrier for channel access scheme
Operation Range	Estimated range of 300 meters in wall power lines
Cabling	Cat. 5 UTP cable
Operating Temperature	0°C to 40°C ambient temperature
Storage Temperature	-20°C to 70°C ambient temperature
Humidity	10 to 90% maximum (non-condensing)
Power Input	100 ~ 240V @ 50/60Hz internal
Power Connector	Embedded US / EU / UK / AU specifications
Housing	Plastic ( 86mm x 55mm x 27mm )
Software Utility	Device detect/diagnostic, NEK password setup for local and remote device Windows 98 SE, ME, 2000, NT, XP, Vista, or 7 for initial setup (optional)
Status Lights	Power: on / off PLC link: red / orange / green / off Ethernet link: solid / blinking / off
Certifications	HomePlug AV Powerline certification FCC Class B / CE mark

