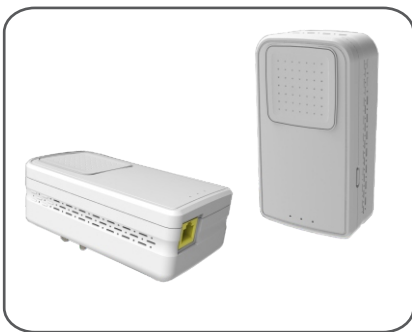


## HomePlug AV2 (1Gbps) > Wireless N Access Point

GigaFast HomePlug AV2 Wireless N Access Point allows you to create or extend a wireless network using HomePlug powerline technology. Using HomePlug as the network backbone, WS859-AP63 can be placed at where a wireless signal is needed, rather than at the farthest corner of a wireless network. Multiple WS859-AP63 can be used to cover larger areas without increasing wireless radiation and with HomePlug powerline technology as your backbone, no additional wiring will be required.

Current wireless technology requires the use of multiple antennas or increased power output. However, the fundamental problem remains: Wireless signals cannot pass through solid objects such as cement walls or building foundations. WS859-AP63 coverage is provided by sending data signals through the walls themselves via the powerline and then providing wireless connectivity in the room where it is needed. Data throughput is then significantly higher than boosting any antenna. With wireless PHY rate at 300Mbps and HomePlug PHY rate at 1Gbps, this HomePlug AV2 Wireless N Access Point is the perfect addition to the GigaFast HomePlug product line.



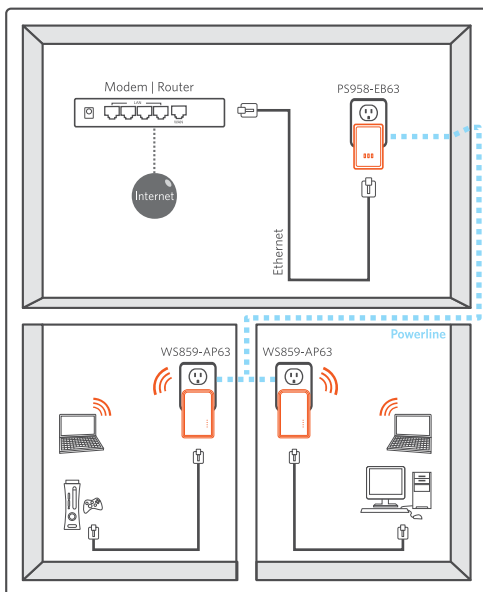
### Features

- Create or extend a wireless network by using HomePlug Powerline technology as the network backbone
- 1Gbps HomePlug performance-ideal for media-centric applications like HD IPTV, gaming and Voice over IP technology
- Compatible with IEEE802.11n specifications providing wireless speed up to 300Mbps PHY rate. Also compatible with IEEE802.11g high rate standard providing wireless speed up to 54Mbps PHY rate
- Co-exist with HomePlug 1.0 ( 14 / 85Mbps )
- Highest level of security with 128-bit AES encryption and WEP / WPA wireless security

### Specifications

	HomePlug PLC	Wireless
Standards	HomePlug AV2	802.11 b/g/n
Security	128 bit AES	64/128 bit WEP, TKIP, AES
Data PHY Rate	Up to 1 Gbps	Up to 300Mbps
Modulation Schemes	OFDM symbol modulation on line synchronization 1024/256/64/16/8-QAM, QPSK, BPSK, ROBO carrier modulation	BPSK/QPSK/16-QAM/64-QAM
Frequency Band	2 - 86 MHz	2.4GHz
Operation Range	Up to 300 meters	Up to 100 meters indoor
Additional Protocols	Mix of TDMA and CSMA/CA channel access scheme; CO device generates a periodic beacon carrier for channel access scheme	N/A

### Application



Main Chipset	Broadcom BCM60333 + BCM43217
Network Interface	One 10/100/1000Base-T with RJ45 port (LAN)
Operating Temperature	0°C to 40°C ambient temperature
Storage Temperature	-10°C to 70°C ambient temperature
Humidity	10 to 90% maximum (non-condensing)
Power Input	100 - 240V @ 50/60Hz internal
Power Connector	Embedded US / EU / UK specifications
Housing	Plastic
Software Utility	Device detect/diagnostic, NEK password setup for local and remote device Windows XP, 7, or 8 for initial setup (optional)
Status Lights	Power: on / off PL link: red / orange / green / off Ethernet link: solid / blinking / off Wireless link: solid / blinking / off
Certifications	HomePlug AV2 Powerline certification FCC Class B / CE mark

